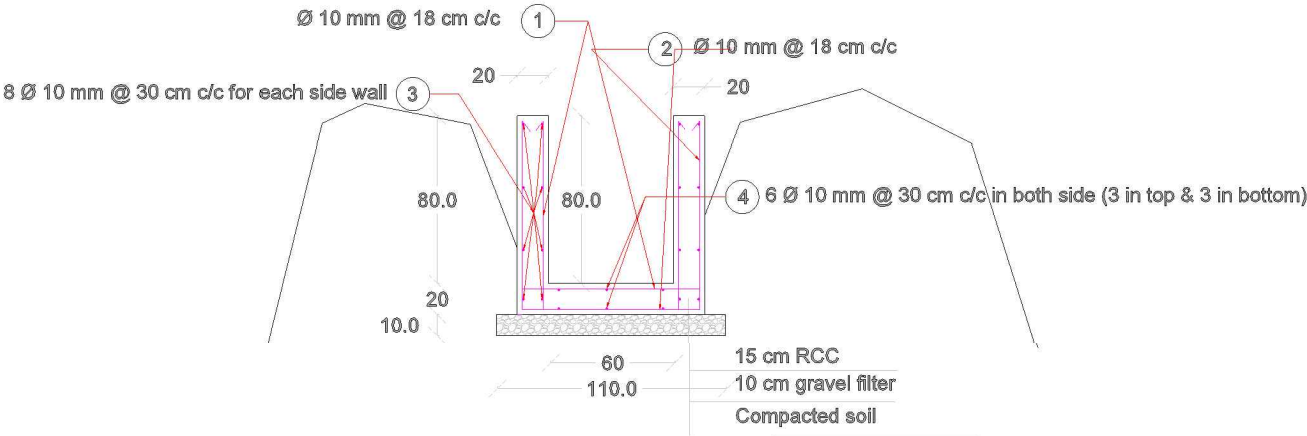
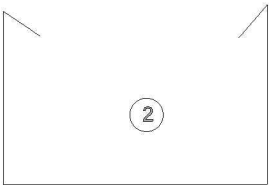
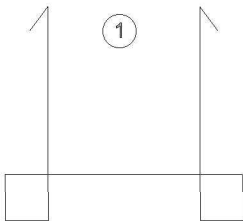
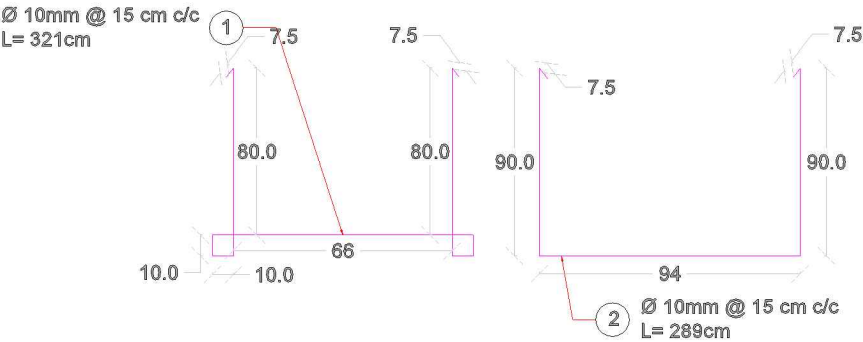


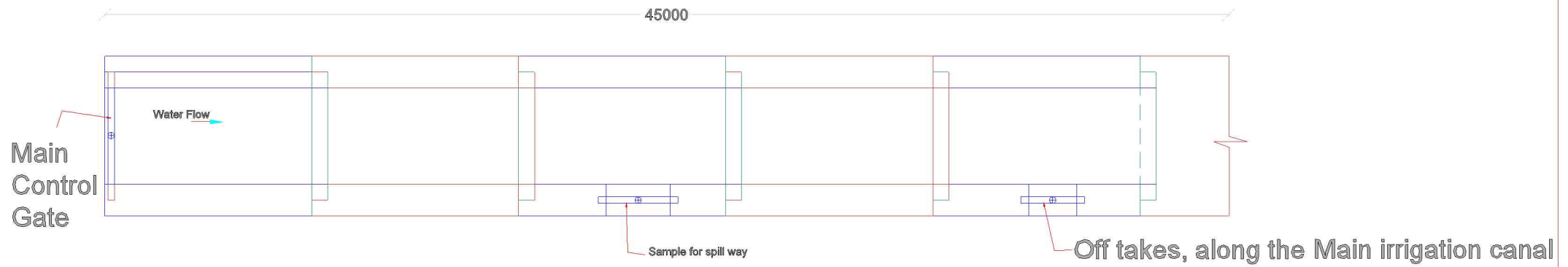
Shape of bar



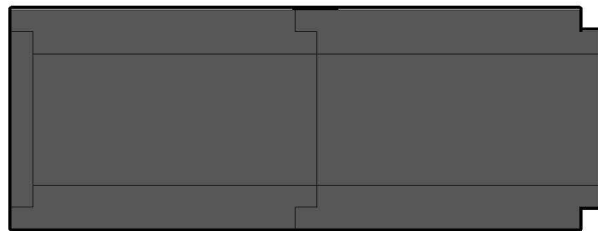
Section A - A



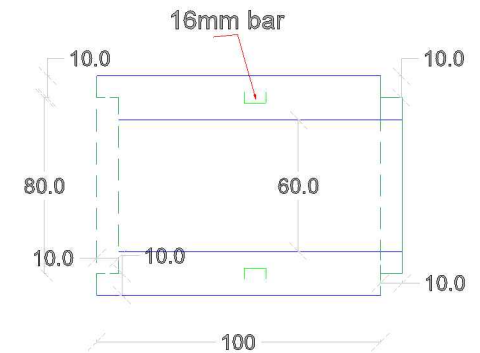
Detail A



Main Irrigation canal, Free cost RCC structure sections installation Plan



Top view



Plane

1. All dimensions are in centimeters unless otherwise specified.
2. Steel reinforcement shall have a minimum yield stress of 2700kg/cm²
3. Minimum concrete cover to steel reinforcement shall be 30mm.
4. Concrete mix shall be proportioned by volume with a water / cement ratio of not more than 0.5
5. Concrete crushing strength 250kg/cm²
6. Refer to the bar shape of reinforcement.
7. This structure is well to be constructed on the ground with low bearing capacity of soil.
8. joints should be sealed with bitumen.
9. The curing should be continuing for this structure till 21 day.

1. All dimensions are in centimeters unless otherwise specified.
2. Steel reinforcement shall have a minimum yield stress of 2700kg/cm²
3. Minimum concrete cover to steel reinforcement shall be 30mm.
4. Concrete mix shall be proportioned by volume with a water / cement ratio of not more than 0.5
5. Concrete crushing strength 250kg/cm²
6. Refer to the bar shape of reinforcement.
7. This structure is well to be constructed on the ground with low bearing capacity of soil.
8. joints should be sealed with bitumen.
9. The curing should be continuing for this structure till 21 day.